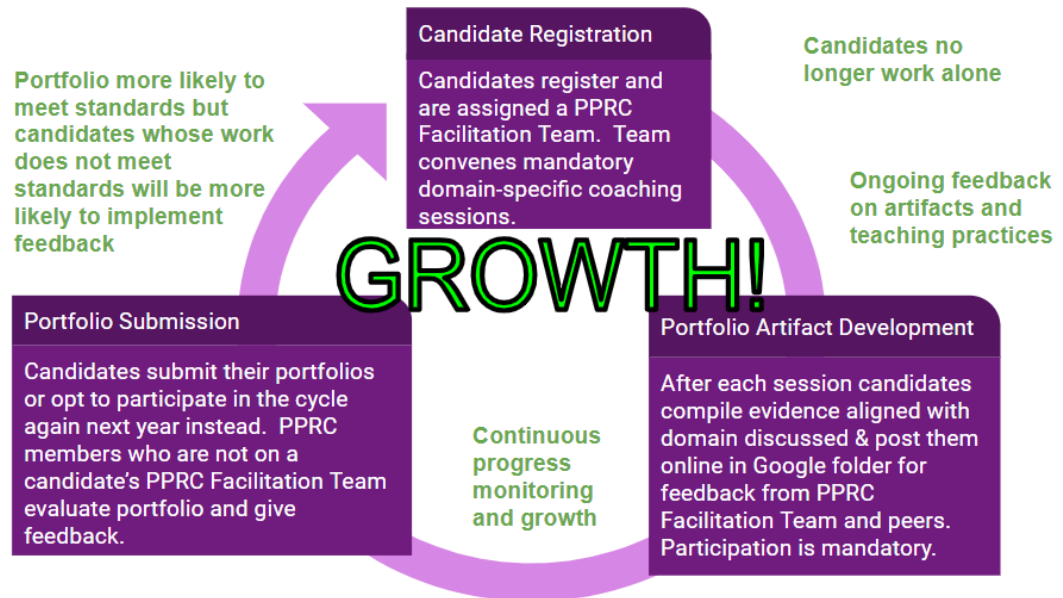


Model Pathway Application Process Changes

Previous process



New process



Model Pathway Application Process Changes

Benefits of the new process:

- ✓ 4 face-to-face sessions will allow for brainstorming and feedback from peers on the professional pathway and model teachers
- ✓ Sessions will each be domain-specific and focused
- ✓ Session dates (within a range), times, and locations will be decided on within each PPRC-Facilitated Team
- ✓ Teams will be composed by common content area, allowing for candidates to strengthen their peer collaboration practices
- ✓ This process is designed to improve your professional practice and capture the excellence of teachers who may otherwise go unrecognized



Important points to remember

- Candidates are required to participate in the PPRC-Facilitated sessions and the online collaboration platform. Portfolios of candidates who do not meet both requirements will not be scored.
- You are welcomed and encouraged to participate in the year-long process as a 'learning year' and then a second time as an 'application/data-collection year' if the additional time is needed to implement best practices and see the desired student growth.

